

J&M LEAD SPOTTERS		
Specifications	Units	MODEL 230
Hydraulic Extension	Ft.	20
Manual Extension	Ft.	0
Extend Force	Lb	28,000
Retract Force	Lb	32,000
Retracted Length	Lb	17
L/R Travel Extended	Ft.	35
L/R Force Extended	Lb	12,000
L/R Travel Retracted	Ft.	15
L/R Force Retracted	Lb	25,900
Maximum Width	Ft.	8
Maximum Pressure	PSI	2,500
Weight	Lb	8,500

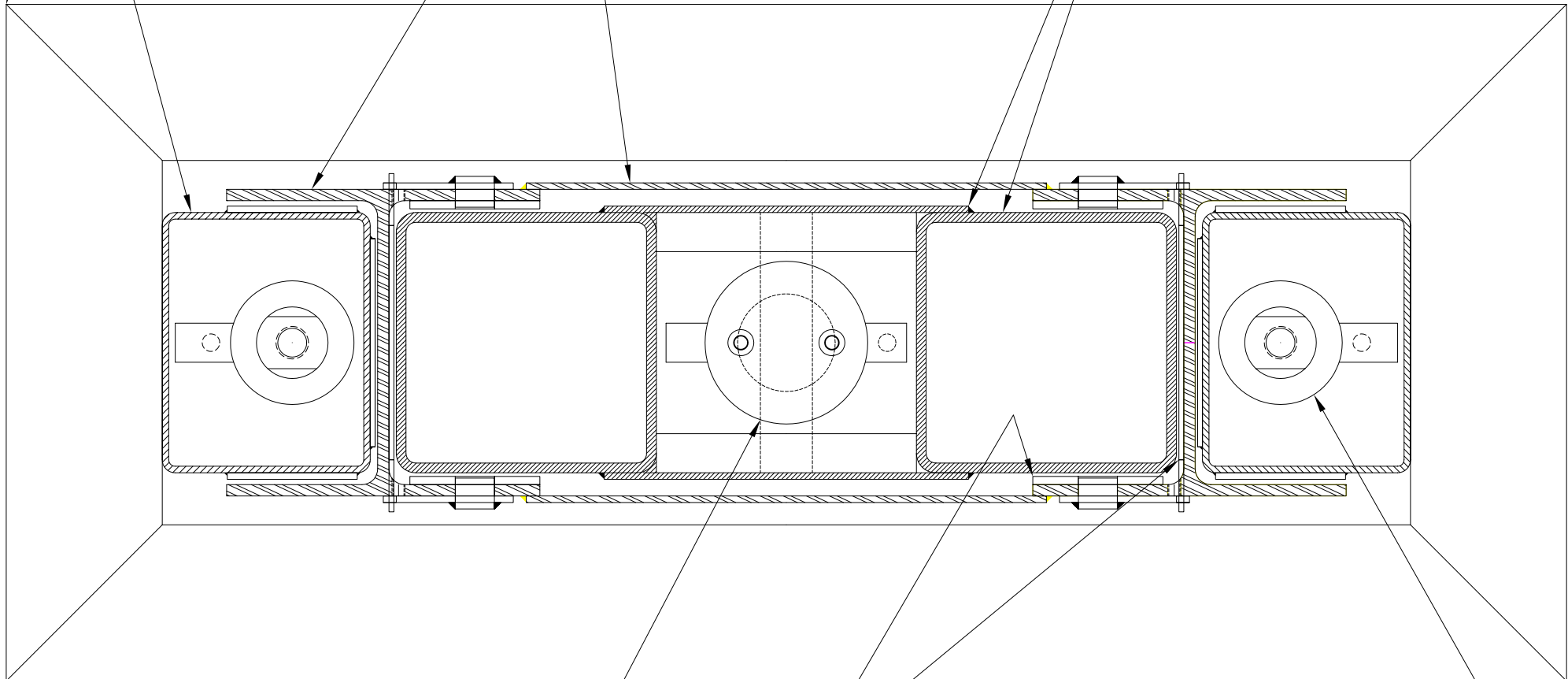
MATERIAL: ~

SCALE: 1/56

REAR SECTION

MID SECTION

FRONT SECTION



5.50" Ø CYLINDER

WEAR PADS
(REPLACEABLE)

4.00" Ø CYLINDER
2 PLACES

MATERIAL: ~

SCALE: 1/6

DWN. BY: KSE	DATE: 10/13/03	MODEL 230 LEAD SPOTTER	DESCRIPTION GENERAL ARRANGEMENT	VIEW A	 FOUNDATION EQUIPMENT LLC PITTSBURGH, PENNSYLVANIA
-----------------	-------------------	------------------------	------------------------------------	-----------	--